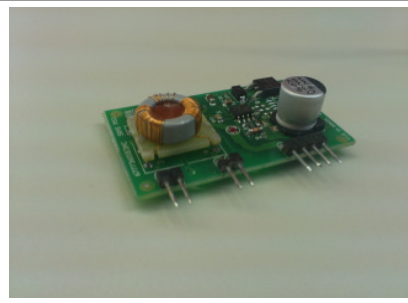


# SKHI PS3



POWER SUPPLY®

## SKHI PS3

Preliminary Data

POWER SUPPLY

### Features

- Supply single or dual secondary sides drivers voltage
- Output to additional transformers (up to 3)
- With additional transformers, can supply up to 8 IGBTs drivers
- Powered by a single +15V power supply
- Short circuit protected by a input fuse
- Suitable for SEMITOP®, MiniSkiip®, SEVENPACK®, SIXPACK® and 4-Pack®

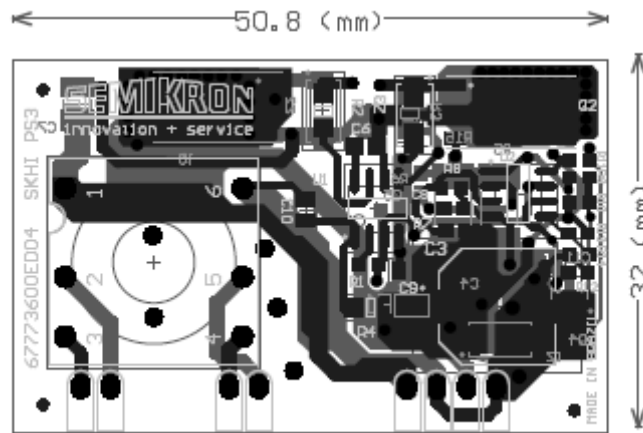
### Typical Applications

- UPS, AC drivers, SMPS, welding inverters and choppers

Absolute Maximum Ratings		T <sub>case</sub> = 25°C, unless otherwise specified	
Symbol	Term	Value	Types
V <sub>S</sub>	Supply voltage primary	17	V
V <sub>isollIO</sub>	Isolation test voltage input-output (1 min. AC)	1500	V <sub>RMS</sub>
T <sub>op</sub>	Operating temperature	- 40... + 85	°C
T <sub>stg</sub>	Storage temperature	- 40... + 85	°C

Electrical Characteristics		T <sub>case</sub> = 25°C, unless otherwise specified			
Symbol	Term	min	typ	max	Units
V <sub>S</sub>	Supply voltage	14	15	16	V
I <sub>S</sub>	Supply current with 1 double driver			100	mA
	Supply current with 2 double driver			180	mA
	Supply current with 3 double driver			280	mA
	Supply current with 4 double driver			320	mA
f <sub>OUT</sub>	Output frequency		100		kHz
V <sub>OUT</sub>	Output voltage (square wave loaded) – Primary Supply 15V DC		30		V <sub>rms</sub>
w	weight		18,5		g

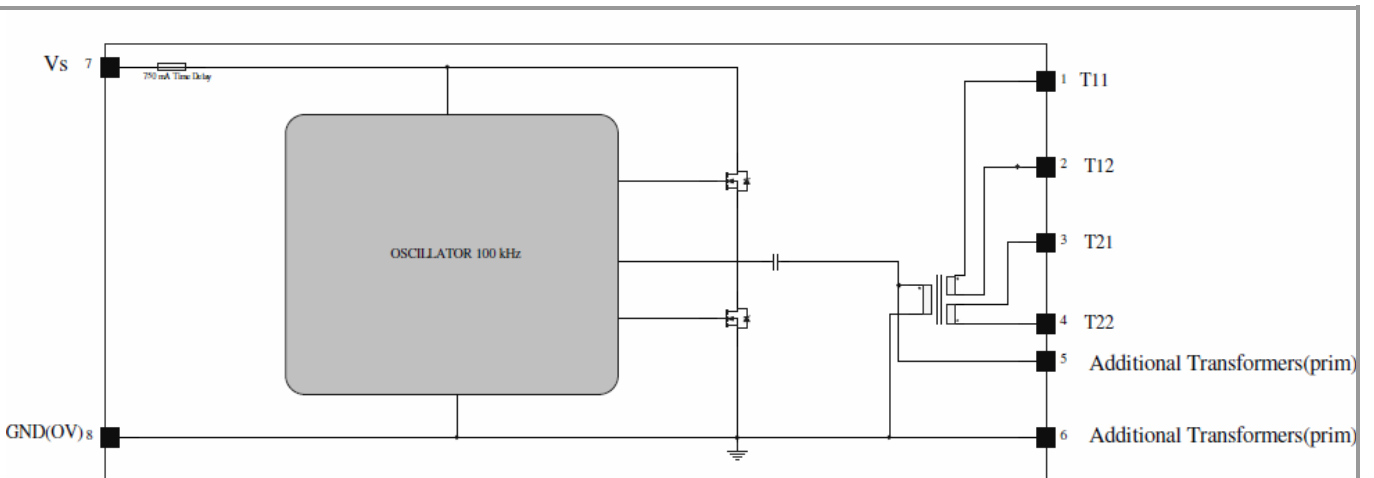
Dimensions in mm



**Connections:**

- Type: pin header.
- Step: 1-2; 3-4; 5-6-7-8: 2,54 mm.
- 2-3: 10,16 mm.
- 4-5: 12,70 mm.
- Distance from left side board to pin 1: 6,604 mm.
- Terminals height from board: 4,96 mm.
- Pin transversal section: Square 0,64 mm.
- Displacement form board plane (Top direction): 1,27 mm.
- Top side maximum component height: 8 mm.
- Bottom side maximum component height: 2 mm.

**Mechanical Data**



**Electrical Data**

PIN No.	Designation	Explanation
1	T11	Secondary side driver 1.
2	T12	Secondary side driver 1.
3	T21	Secondary side driver 2.
4	T22	Secondary side driver 2.
5		Additional transformers.
6		Additional transformers.
7	+Vs	+15V input.

8	GND/0V	+15V input reference
---	--------	----------------------

PIN array

This technical information specifies devices but promises no characteristics. No warranty or guarantee expressed or implied is made regarding delivery, performance or suitability.